

# Global Campus that Shapes and Transforms

# Lea.

Powered by AIPC Pandora

**Expert Course in Collaborative  
Entrepreneurial Leadership in the Territory**



Collaboration with:



Continental  
University  
of Mexico ®



Continental  
Florida  
University

Experience  
**Social  
Fellowship  
Responsibility  
Action**

Certified by:



europass  
European Union

globalUP  
AFS Global Competence Certificate



Boost your professional career with global educational experiences. LEA Global Pathways offers short-term training programs designed for professionals and university students seeking to acquire key skills in international contexts, with official recognition worldwide.

Our programs combine academic training, professional practice, and fieldwork with local organizations, and are certified through European micro-credentials recognized within the Europass and the European Qualifications Framework (EQF), in addition to a Global Competence Certificate (AFS).

# Expert Course in Collaborative Entrepreneurial Leadership in the Territory

Innovation, Territory, and Artificial Intelligence for Social Impact

**Location:**

**Cuzco, Peru** – In partnership with Universidad Continental

**Proposed dates:**

**October 2025** – 7 days in person (Saturday to Saturday) + preliminary virtual sessions and a final online presentation afterward.

## A specialized, experiential, and transformative training program

This expert course offers intensive, hands-on training in collaborative leadership, purpose-driven entrepreneurship, and territorial innovation methodologies. It combines direct engagement with local stakeholders, the development of real solutions to territorial challenges, and the use of tools such as artificial intelligence applied to social impact.

In collaboration with Continental University, one of Peru's most forward-thinking and impactful educational institutions, this program aims to empower changemakers with the skills and mindset to drive meaningful transformation in their communities.

The Expert Program in Collaborative and Entrepreneurial Leadership in the Territory provides students with the opportunity to take action and increase their impact as leaders on three levels: personal, collective, and methodological.

The experience integrates the KiteLab methodology and the approach of the MieB program (Móstoles Impact Entrepreneurship Booster), adapted to the Latin American context.

## Before traveling: preparation and connection

### 3 preliminary virtual sessions with the international group:

- Connection between participants and facilitators
- Introduction to the challenge and the territorial ecosystem
- Theoretical capsules on systemic innovation, collaborative leadership, and the ethical use of AI
- Logistical and emotional preparation for an intense collective experience

## Training Objectives

- Train participants in collaborative methodologies for innovation and social entrepreneurship.
- Integrate the use of artificial intelligence tools to generate solutions with positive impact.
- Strengthen personal and collective leadership with a territorial and intercultural approach.
- Create MVPs (minimum viable products) in response to real challenges in the territory.
- Activate a learning and transformation community among young Ibero-Americans.





## Structure of the In-Person Week

### Day 0 – Saturday

#### ***Arrival in Cuzco***

- Welcome and acclimatization
- Group opening dinner

### Day 1 – Sunday

#### ***Cultural and Territorial Immersion***

- Guided tour of the historic center
- Meeting with social and environmental leaders
- Active leisure and outdoor group bonding

### Day 2 – Monday

#### ***Course presentation***

- Team-building activities and dynamics
- Guided tour of the branch and cultural immersion

### Day 3 – Tuesday

#### **KiteLab Innovation Lab**

- Activation of collective intelligence
- Identification and analysis of real territorial challenges
- Team formation and initial solution design
- Connections with local ecosystem stakeholders

### Days 4 and 5 – Wednesday and Thursday

#### ***Entrepreneurial training and incubation (Mieb model + AI)***

- Impact Canvas and implementation strategies
- Practical workshops: communication, prototyping, impact, and financing
- Use of generative AI to accelerate ideas, validate hypotheses, and communicate
- Personalized mentoring and MVP review sessions

### Day 6 – Friday

#### ***Collaborative Demo Day***

- Interactive feedback space with territorial and ecosystem stakeholders
- In-person closing with awarding of microcredential (50 hours)
- Collective celebration and final evaluation of the experience
- Cultural visit to Sacsayhuamán

### Day 7 – Saturday

#### ***Cultural and Territorial Immersion***

- Historical tour of the Sacred Valley: Chinchero, Písac, and Ollantaytambo



### After the gathering: closure and final presentation

In the weeks following the trip, a **final online presentation session** will be held, where each team will share their final proposal.

This session will be joined by key figures from the innovation and entrepreneurship ecosystem, offering potential connections to new opportunities.

### Methodologies

**KiteLab:** Open innovation and co-creation to address complex challenges.

**Mieb:** Incubation of practical solutions with both local and global perspectives

**PIAP Model (Person – Artificial Intelligence – Person):** AI for social transformation through responsible and creative use.

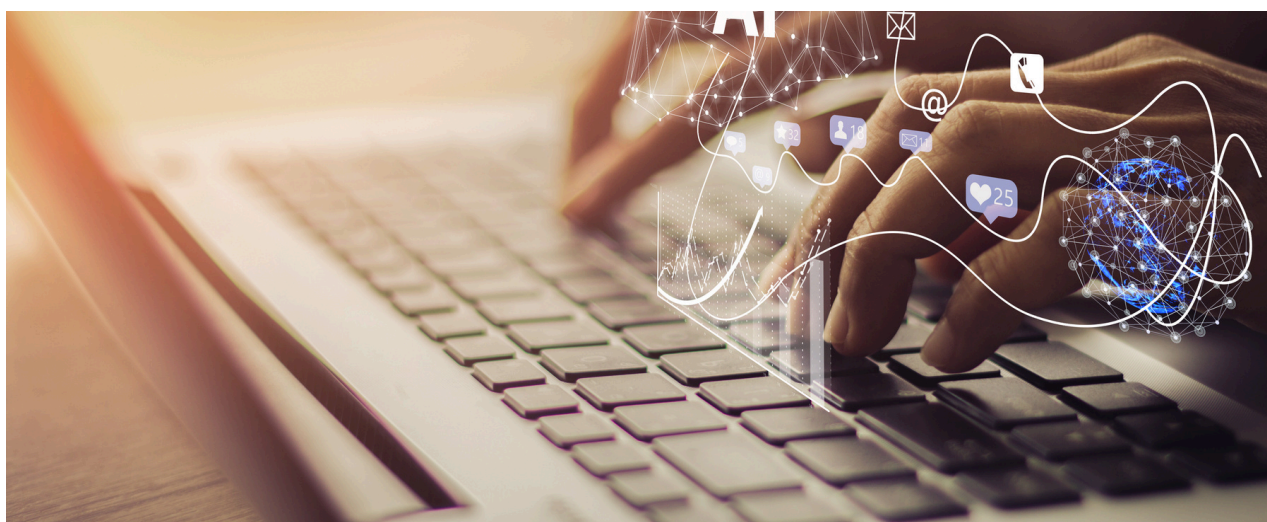
## Target group

University students from Universidad Continental and from the international Sfera network who are interested in training in:

- Collaborative and transformative leadership
- Social and territorial innovation
- Sustainable entrepreneurship
- Artificial intelligence applied to the common good
- Working in multicultural contexts

## Expected results

- Acquisition of real-world skills in leadership, entrepreneurship, and collaborative innovation
- Development of impact prototypes applicable to the territory
- Strengthening of an Ibero-American community of young change-makers
- Certificate of completion as an “Expert Course in Collaborative and Entrepreneurial Leadership in the Territory”



## Cost of the program

**Cost for International Students: \$993** (accommodation included)

**Cost for Students Residing in Peru: \$566**

(accommodation not included and partial scholarship for the first 20 places)

Includes:

- 7-day project with all scheduled activities included
- Accommodation at Habari Maalum College in a double room
- Full board (meals included)
- Airport transfers and local transportation

Does not include:

- Airfare
- Visa fees
- Vaccination costs (if applicable)
- Personal expenses



### European Micro-Credentials: Official Recognition of Your Skills

LEA co-issues micro-credentials alongside universities and other accredited institutions. These digital credentials clearly and consistently validate your learning outcomes, professional skills, and field experience.



# Lea.

Powered by AIPC Pandora

Collaboration with:



Continental  
University  
of Mexico ®



Continental  
Florida  
University

Social  
Fellowship  
Responsibility  
Action

Certified by:



europass  
European Union

globalUP  
AFS Global Competence Certificate